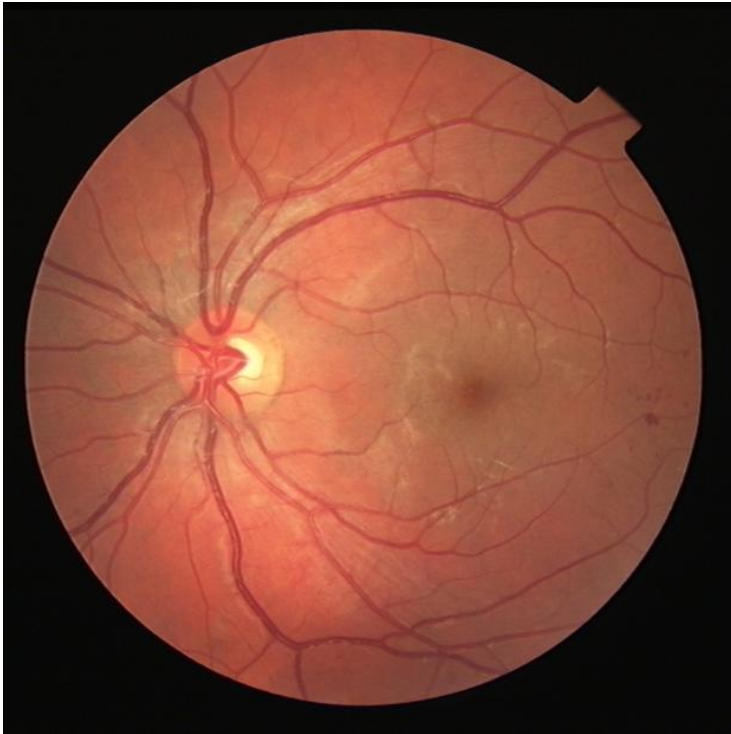


## Diabetic Retinopathy Referral Guidelines 2019

### R1 - background retinopathy



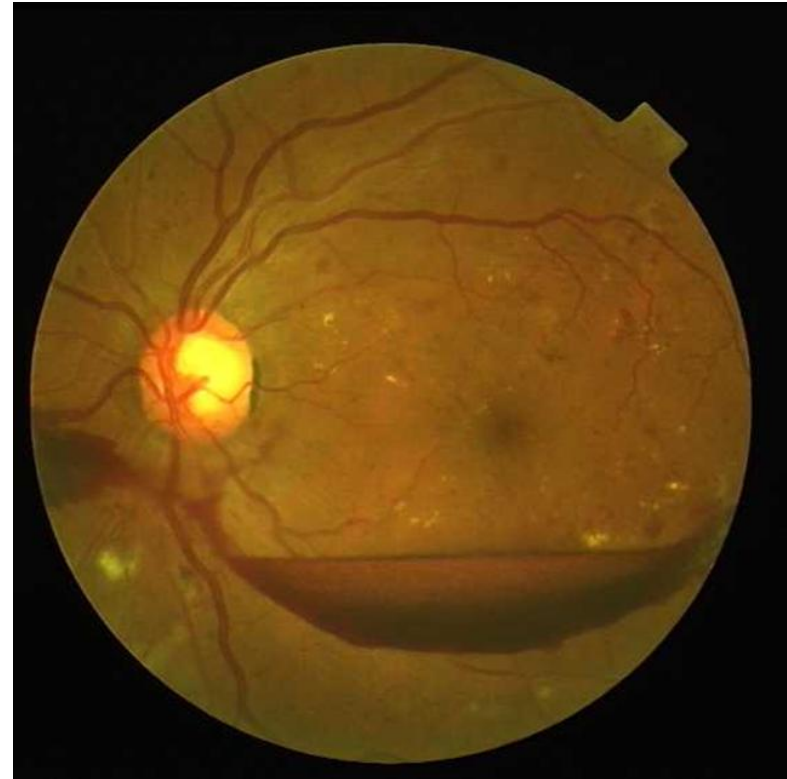
**Action** - routine diabetes care with **annual screening in DESP.**

### R2 pre-proliferative retinopathy



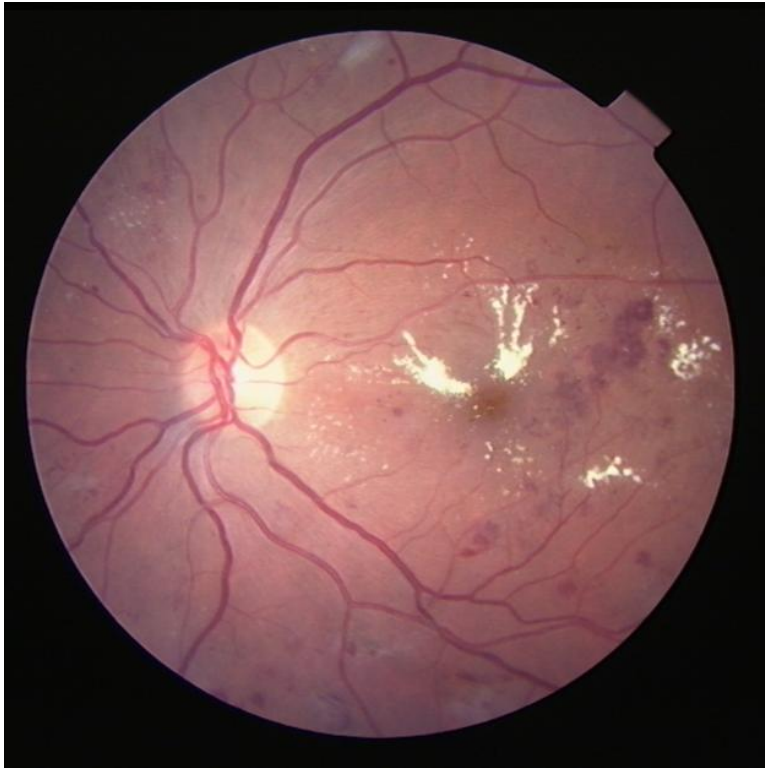
**Action** - refer routinely to hospital eye service - patients should be seen **within 13 weeks of the referral.**

### R3A proliferative retinopathy



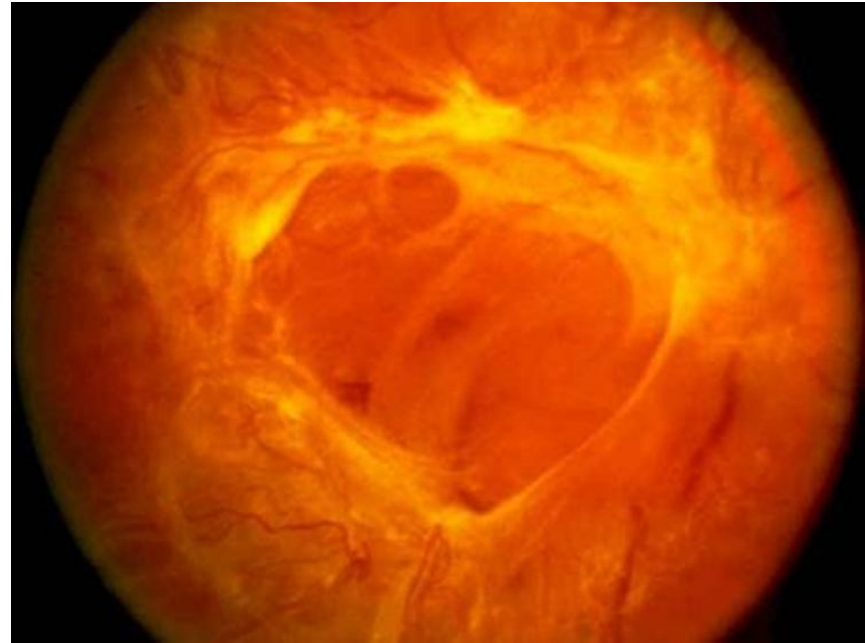
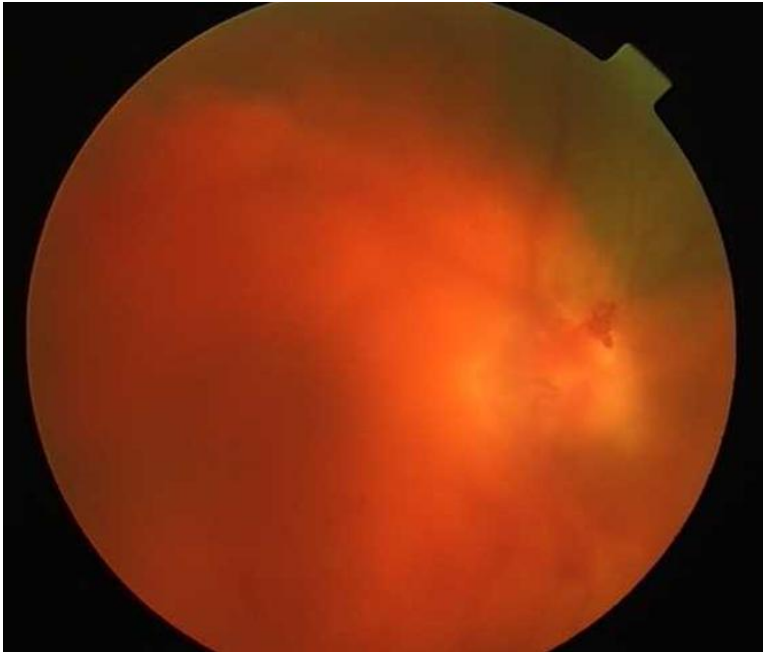
**Action** - fast track referral to HES the patient must be seen within **6 weeks of the referral**.

### M1 maculopathy



**Action** - refer routinely to hospital eye service - patients should be seen **within 13 weeks of the referral**.

### **Sudden loss of vision**



**Action - Emergency referral to HES (same day).** Any diabetic patient that presents with sudden loss of vision, which could be attributed to a vitreous haemorrhage or tractional retinal detachment, requires same day emergency referral to the hospital eye service.

**Diabetic Screening Service Guidelines may be useful to review and can be found here:**

<https://www.gov.uk/government/publications/diabetic-eye-screening-retinal-image-grading-criteria/nhs-diabetic-eye-screening-programme-grading-definitions-for-referable-disease-start-date-october-01>